

Our Benefits Journey

Atos – Who we are



Worldwide digital leader & **#1 leader** in Europe



€13 billion annual revenue



120,000 experts



73 countries



Worldwide IT Partner of the Olympic and Paralympic Games

Influences

**Pace of
Technology**

0100
1011
0100

**Business to
Consumer
Experience**



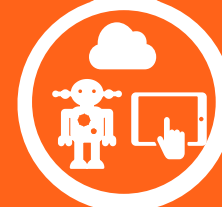
**Interact on
Multiple
Devices**



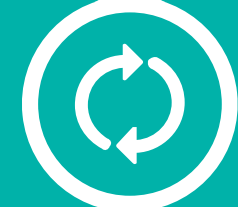
**Personal
Experience**



**Ways of
Working**



**End to End
Service**



Our Goals

**Improved Employee
Engagement Score**

Increased Efficiencies

Future Proof

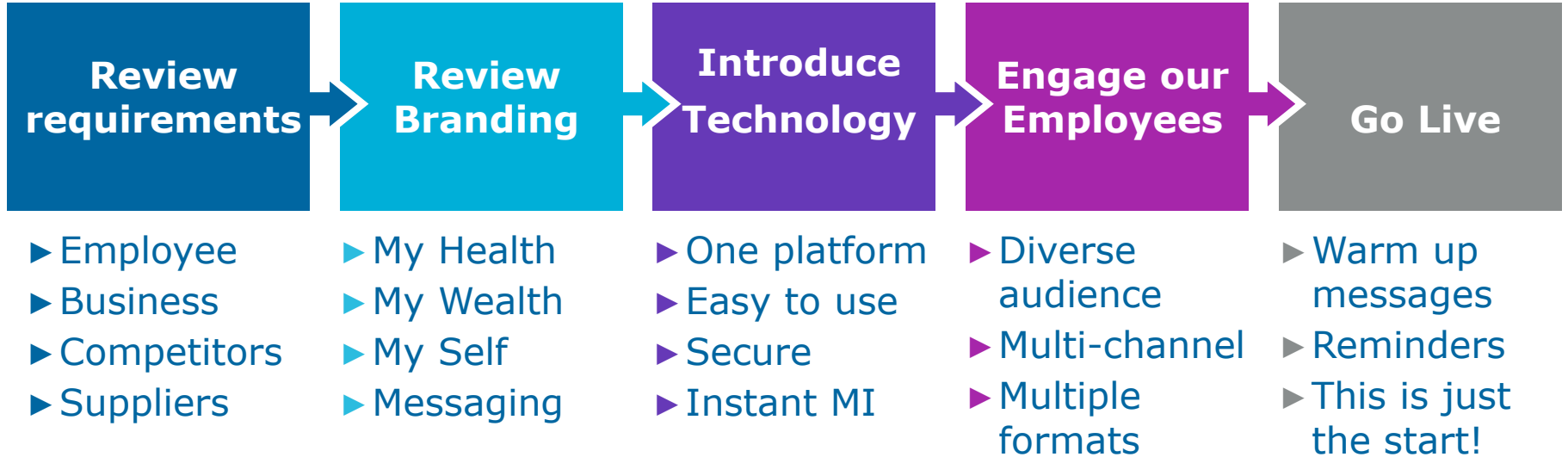


Legal Compliance

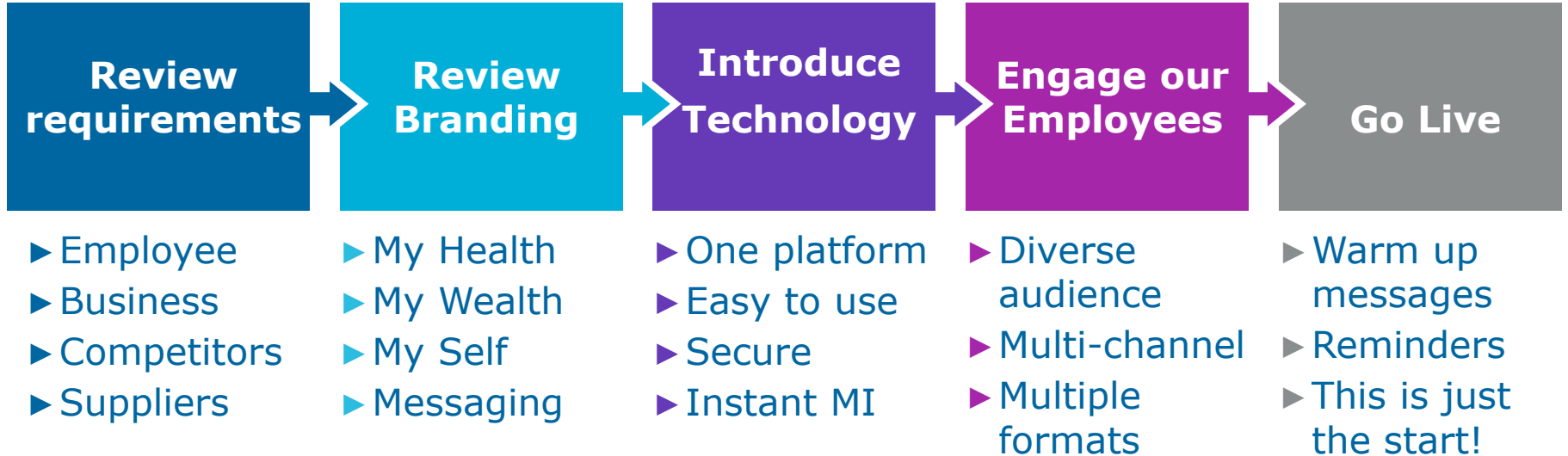
**Improved User
Experience**

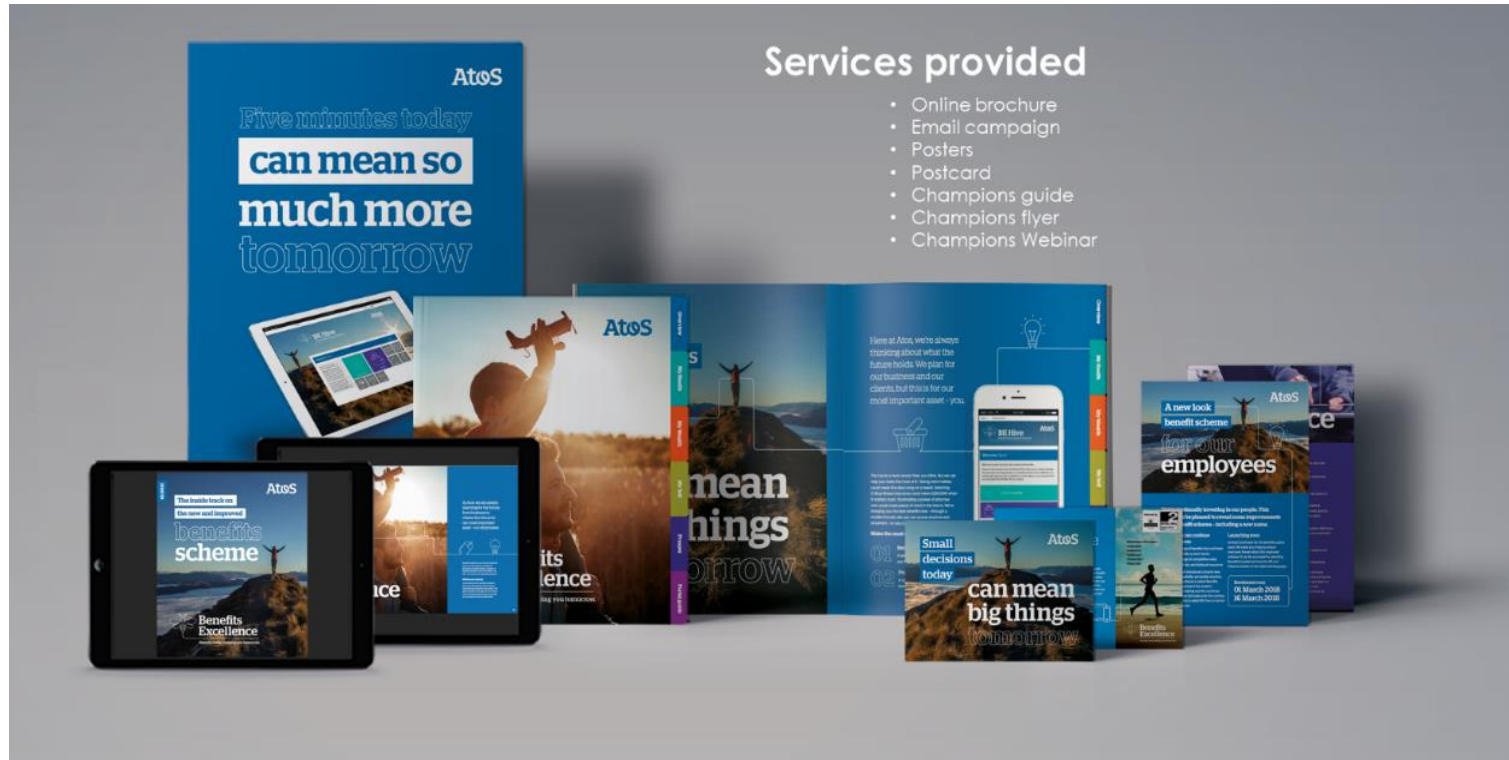
Instant Data Analytics

Our Approach



Our Approach

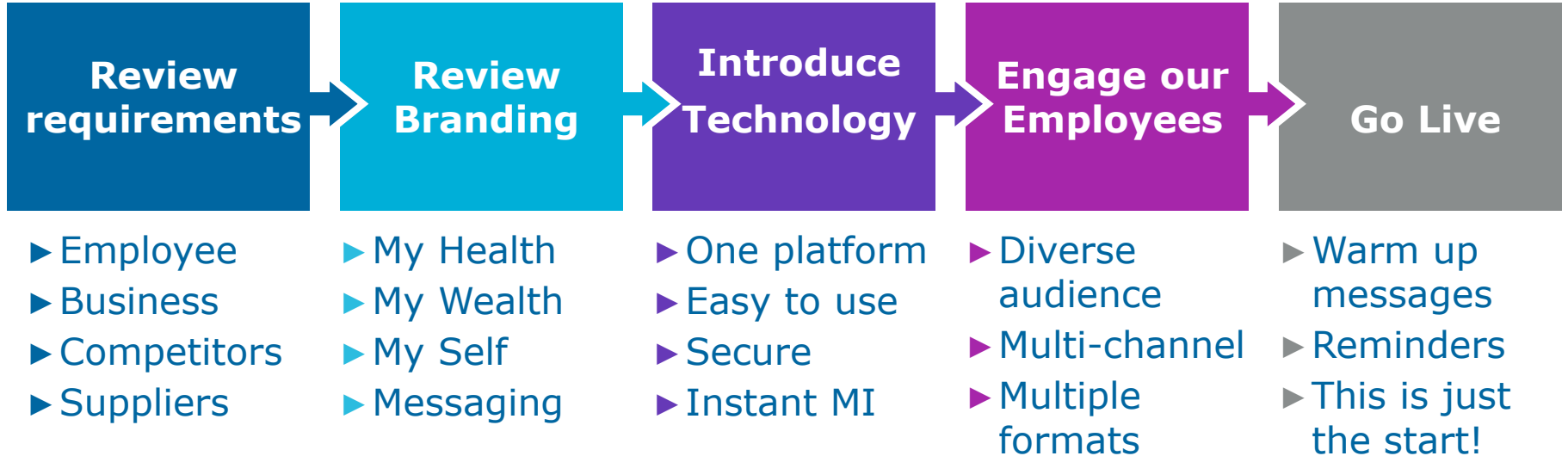




Services provided

- Online brochure
- Email campaign
- Posters
- Postcard
- Champions guide
- Champions flyer
- Champions Webinar

Our Approach



Our Results



4% increase
in Employee
Engagement
scores



11% increase
in Usage



£400k NI
Savings



Better
equipped to
support our
People
Strategy



Improved our
employee
experience

Stay on top of **your** health and wellbeing

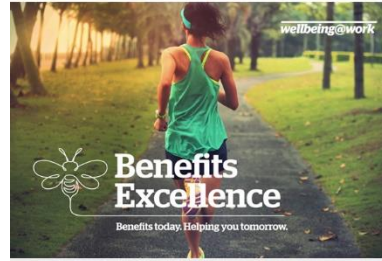


Look after yourself with Doctor@Hand and join up to Cycle to Work and SmartFit gym memberships, all year round.

Take advantage of these and other health benefits. Select 'Benefits Excellence' from the HR and Finance section of the Alpha landing page.



Atos



Be a healthy and happy you

Today is Health@Work day and we are looking at ways to keep you fit and well. The good news is, we have some benefits designed to do just that. From Cycle to Work schemes and discounted gym memberships, you have access to **Benefits Excellence** to help boost your physical wellbeing, all year round.

What's more, you can make your selections anytime and anywhere.

Available to select all year round via Prosper

If you didn't select these at annual enrolment, don't worry, you can still take advantage.

Cycle to Work

Choose a new bike worth up to £1,000, and help both your health and the environment on your commute to work. Save money on tax and National Insurance, as well as fuel, and spread the cost over 12 months.

SmartFit

Get discounted rates on gym memberships, boot camps, online courses and equipment, nationwide. Access yoga, gyms, swimming, Pilates and much more - all for less.



If you need any help, please call the helpdesk between 8.30am and 5.30pm, Monday to Friday, on 02382 020 059. Alternatively, submit an online query through the website.



Engage



Recognize & reward



Develop



Care

Our Results



4% increase
in Employee
Engagement
scores



11% increase
in Usage



£400k NI
Savings



Better
equipped to
support our
People
Strategy



Improved our
employee
experience

Employee Testimonials

“I was particularly **pleased to see the diversity of our employees reflected** in the brochure. These are small actions that have a huge impact on our colleagues. To see people like themselves and their families represented in this brochure is huge.”
LGBT Diversity Lead

“really impressed with the new benefits hub user friendly and **accessible from my mobile**”
Global HRBP

“**Love the branding/format** – very digital!”
SVP Sales & Markets

“**Great to see such a wide range of benefits** available to me, the **virtual GP is an excellent addition**”
Line Manager

“the new website looks great, very **easy to navigate** too :)”
Principal Consultant

“System looks a lot nicer and finally having **the option to adjust some benefits**, e.g. pension contributions **outside of the annual renewal is great**”
Architect

“The new app is brilliant. So **simple to use**. The front end dashboard is a massive improvement over the previous system.”
Testing Solutions Manager

Thank you

For more information please contact:

T+ 33 1 98765432

M+ 33 6 44445678

firstname.lastname@atos.net

Atos, the Atos logo, Atos Syntel, Unify, and Worldline are registered trademarks of the Atos group. October 2018. © 2018 Atos. Confidential information owned by Atos, to be used by the recipient only. This document, or any part of it, may not be reproduced, copied, circulated and/or distributed nor quoted without prior written approval from Atos.

The Atos logo is displayed in a bold, white, sans-serif font. The letter 'o' is stylized with a white circle inside it, creating a unique visual identity for the company.